

IR-Fusion™ Technology

Infrared and visible light images fused together on one display.

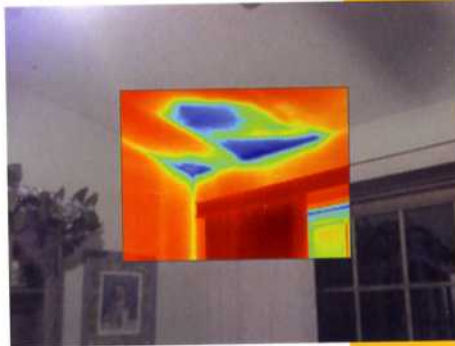
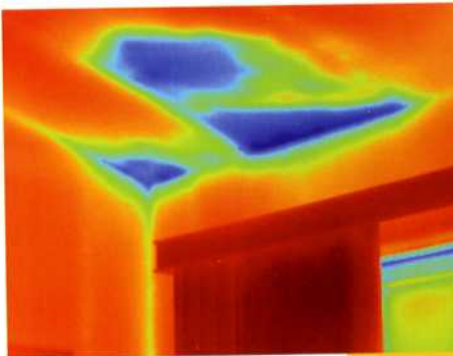
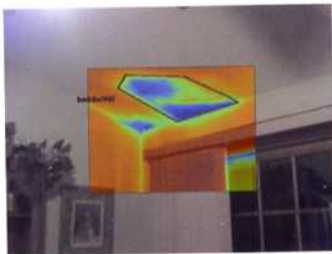
IR-Fusion Technology captures a visible light image in addition to the infrared image and takes the mystery out of IR image analysis. It helps to better identify and report suspect components and enable the repair to be done right the first time.



Five viewing modes

Full IR – For analyzing very high resolution IR imaging. Detect the smallest temperature variations to track down the origin of problems and fully document the extent of remediation. Full IR images are automatically linked to full visible light images.

Picture-in-Picture – For creating an IR “window” surrounded by a visible light frame to easily identify thermal anomalies, while maintaining a frame of reference with surroundings.



Alpha blending – For combining visible and infrared images together in any ratio to create a single image with enhanced detail that will help in precisely locating problems.

IR/visible alarm – For displaying only temperatures that fall above, below, or in between a specified range as IR image, leaving the rest of the scene as a fully visible light image

Full visible light – A bright, detailed pixel-for-pixel reference image of subject areas for documentation and reporting.

See things both ways

To communicate critical information, infrared images only are no longer enough. With revolutionary IR-Fusion technology, one can better identify details, manage and analyze images by combining both the infrared and visible light images. IR-Fusion technology simultaneously captures pixel-for-pixel infrared and visible light images and allows full image optimization with five different on-camera as well as software viewing modes. With the integrated laser pointer visible on the images, precise fault identification is easy. All FT models of the Fluke IR FlexCam Thermal Imagers feature this unique technology.



AIRBORNE ENVIRONMENTAL CONSULTANTS



IDEAL SERVICE FOR PROPERTY OWNERS, REAL ESTATE AGENTS,
PROPERTY MANAGERS, LENDERS, INSURANCE ADJUSTERS

- Risk Management Assessment
- Mold Inspection, Identification and Prevention
- Moisture Assessment, Sample Collection and Technical Documentation
- Applied Thermology, Infrared Moisture Detection
- Investigation, Expert Testimony
- Forensics - Cause and Origin
- 24/7 Emergency Flood Service

Texas Department of State Health Mold Assessment Consultant—License# MAC0408
IICRC Master Fire and Smoke Restorer and Cleaner—RN# 33865

972-709-6259 | stateassessor@aol.com | www.texasmoldinspection.com